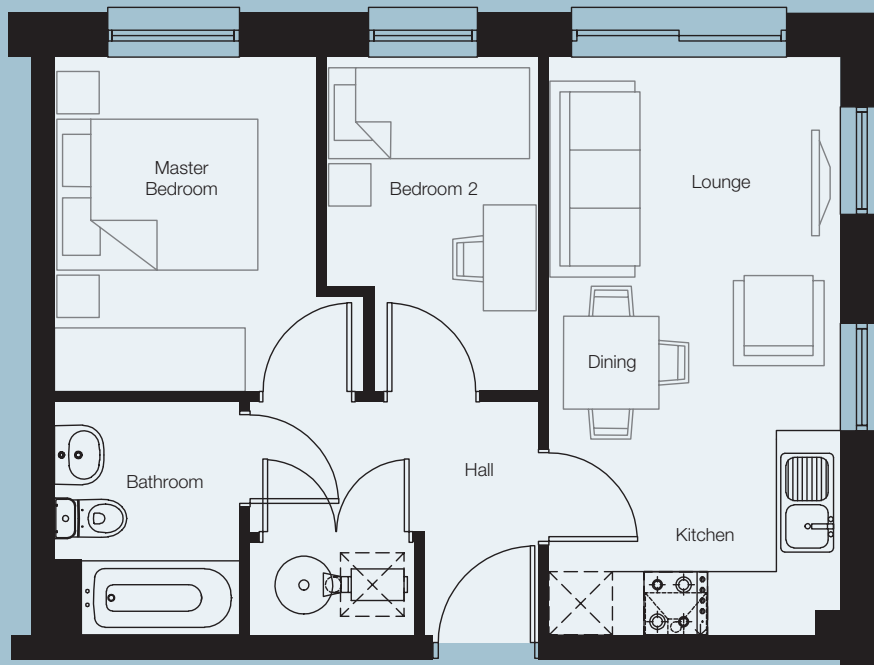


**SUPURBAN
LIVING
IS HERE**



Please note: These windows are only on plots 91, 95 & 99.

All plots have a Juliette balcony

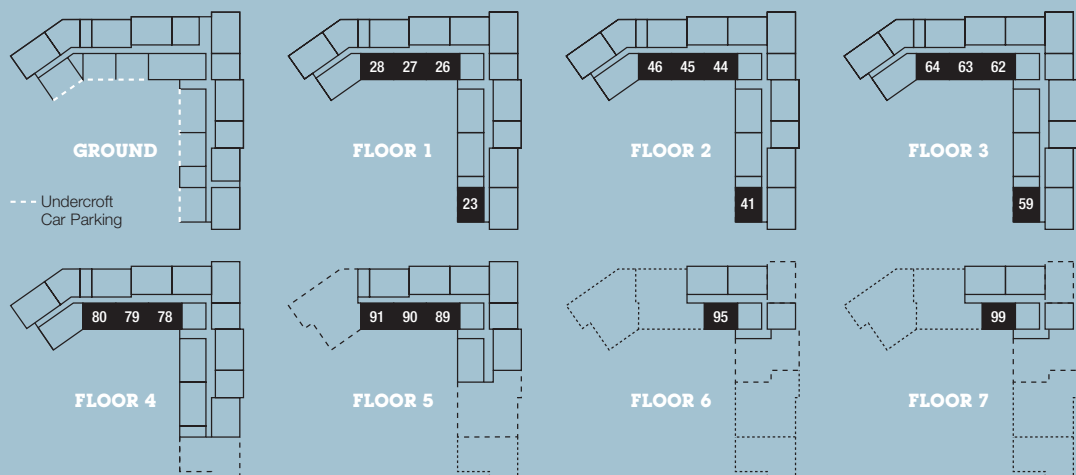


Image is indicative only

APARTMENT TYPE 2 - 2 BEDROOM

Apartment No: 23, 26, 27, 28, 41, 44, 45, 46, 59, 62, 63, 64, 78, 79, 80, 89, 90, 91, 95, 99

Lounge/Kitchen/Dining	5.46m x 2.75m	17'11" x 9'0"
Master Bedroom	3.16m max x 2.93m max	10'4" max x 9'7" max
Bedroom 2	3.16m max x 2.00m max	10'4" max x 6'7" max
Bathroom	2.20m x 1.75m	7'3" x 5'9"



**NEW
BROUGHTON
QUARTER**

Disclaimer: The plans of individual apartment types may vary from those illustrated. All room sizes are approximate maximum dimensions. Positions and sizes of windows and balconies may vary from floor to floor. All ground floor plots or those that are in the inside wall of the building have Juliette balconies. All remaining plots have a walk on balcony. Please ask our sales consultant for detailed information. Countryside Properties November 2007.


**Countryside
Properties**